



The EZ-Guide® 250 system provides high-quality, entry-level guidance capabilities at an entry-level price. It is well-suited for cereal crop applications that can be accomplished with submeter accuracy. Use it for basic guidance to make your farming operations easier in any farming season.

Display Features

- Compact 10.9 cm colour display
- One-touch function buttons
- Rugged construction for everyday field use
- 15 built-in LED lights
- High-performance, integrated GPS receiver

Precision Agriculture Capabilities

- Manual guidance and mapping
- Trimble® steering system compatibility
- USB data transfer for in-office analysis

Simple Installation And Ease Of Use

With its colour display, one-touch function buttons, and intuitive interface, the EZ-Guide 250 system allows you to quickly access guidance lines and coverage maps and easily perform your day-to-day farming tasks.

Enhanced Performance

By offering overhead and perspective views of your field, the EZ-Guide 250 system allows you to easily see where you are and where you have been. It also features bright guidance LEDs that provide visual feedback to keep you on track.

Satellite Coverage And Accuracy Levels

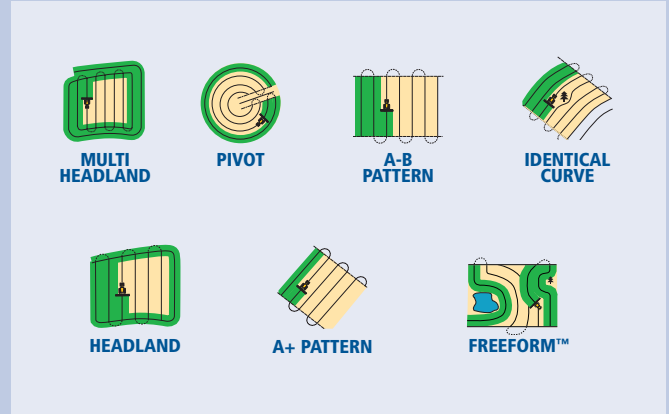
The EZ-Guide 250 system is compatible with the GPS satellite constellation in many areas of the world. Get submeter pass-to-pass accuracy with SBAS—ideal for farming applications that can be accomplished with lower-accuracy corrections.

Steering Compatibility

Upgrade to a Trimble EZ-Steer® assisted steering system, to complete your total guidance package and operate with ease.

Feature Mapping

Perform point, line, coverage, and area mapping in a variety of field patterns. This flexibility allows you to work in different patterns and shapes that best fit the layout and contours of your field.



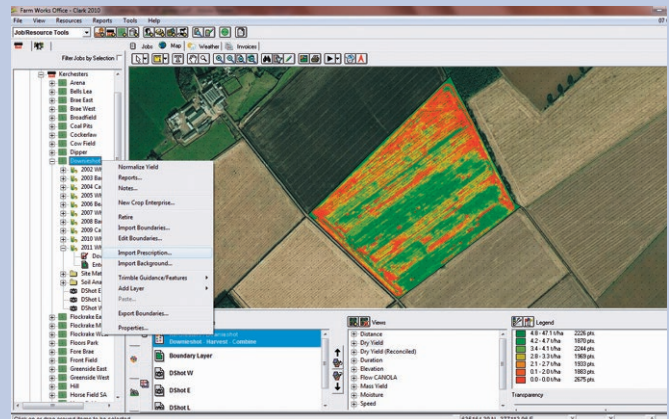
Hands-free Guidance Capabilities

Upgrade to the Trimble EZ-Steer assisted steering system for low-stress steering capabilities for your farming applications. The EZ-Steer system turns the steering wheel for you by combining a friction wheel and motor with guidance from the display.

Easily install and transfer the EZ-Steer system from vehicle to vehicle for use in all stages of the crop cycle.

Information Exchange and Farm Software

Transfer your collected data from the field to the office using a USB drive. Use this data within Farm Works Software® solutions for accurate analysis and record keeping for your farming operations.



Trimble Agriculture Division
 10368 Westmoor Drive
 Westminster, CO 80021
 USA
 +1-720-887-6100 Phone
 +1-720-887-6101 Fax

Trimble Navigation Limited
 Corporate Headquarters
 935 Stewart Drive
 Sunnyvale, CA 94085
 USA
 +1-408-481-8000 Phone
 +1-408-481-7740 Fax

Trimble Germany GmbH
 Am Prime Parc 11
 65479 Raunheim
 GERMANY
 +49-6142-2100-0 Phone
 +49-6142-2100-140 Fax



www.trimble.com/agriculture